

pasquali UTILITY TRAILERS



MAXIMUM TRACTION WITH 6-WHEEL DRIVE

The Pasquali line of drive wheel trailers coupled to our 4-wheel drive articulated tractors provides a unique combination that can transport loads of up to 2½ tons over a wide range of difficult terrains. Some additional features of these trailers are:

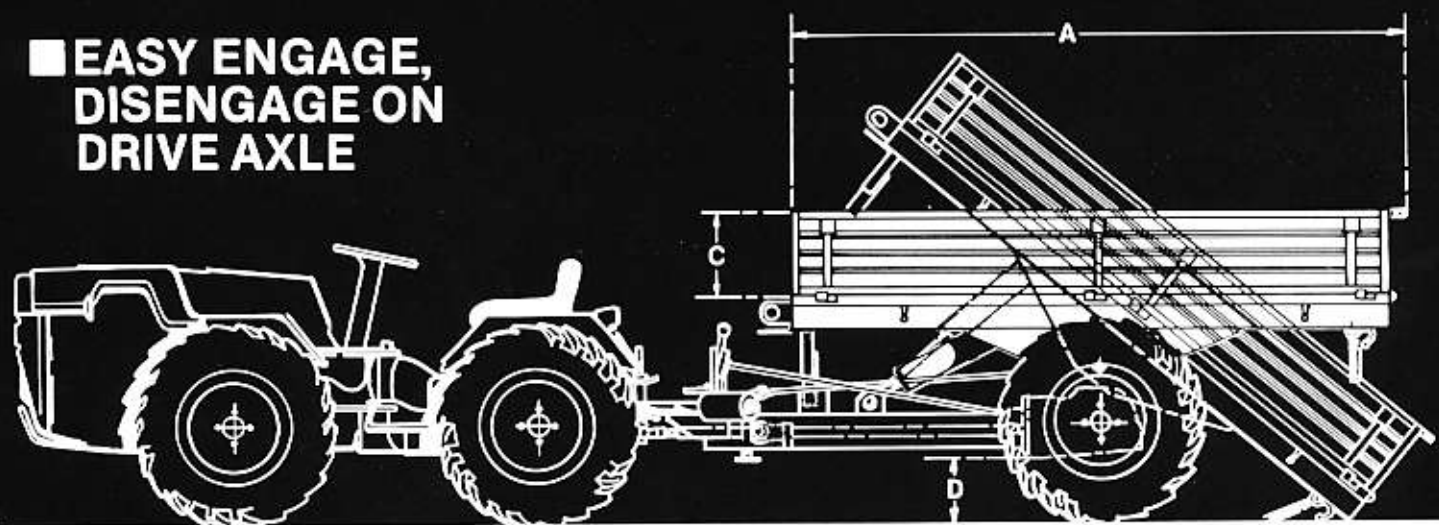
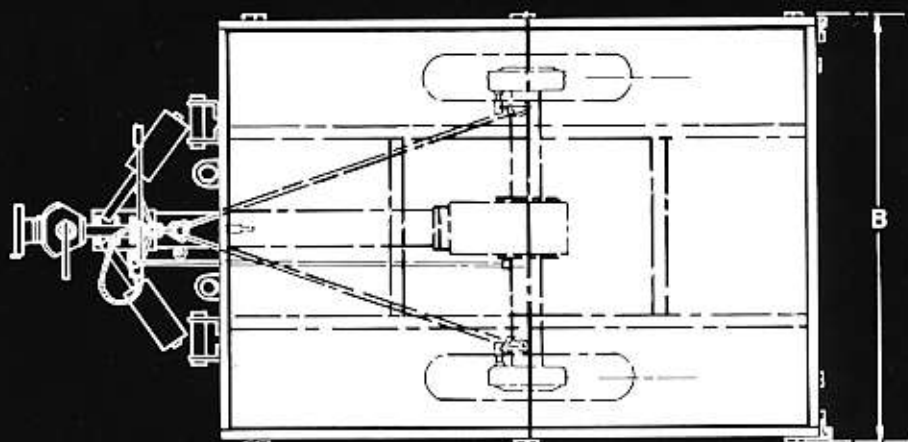
- Tilt box
- Optional hydraulic dump
- Standard parking brake
- 5000 lb. max. payload
- Removable side boards
- Heavy metal construction
- Rear PTO
- Tiedown eyelets

pasquali **UTILITY TRAILERS**

■ ATTACHES EASILY TO THE LOWER PTO ON YOUR TRACTOR.

■ AVAILABLE WITH, OR WITHOUT DRIVE AXLE.

■ EASY ENGAGE, DISENGAGE ON DRIVE AXLE



SPECIFICATIONS

DIMENSIONS	MODEL 414.15 WITH DRIVE AXLE	MODEL 375 WITHOUT DRIVE AXLE
Box Length (A)	8 feet	6½ feet
Box Width (B)	5 feet	5 feet
Box Depth (C)	12 inches	12 inches
Ground Clearance (D)	10 inches	12 inches
Load Capacity	5000 lbs.	3000 lbs.
Drive Axle	Standard	N/A
Hydraulic Dump	Optional	Optional
PTO On Trailer	Standard	N/A
Brakes	Standard	Standard
Standard Tires	6.00 x 16	6.00 x 16

The above specifications are subject to change without notice.